

PROJECT NEWS

Advocate Illinois Masonic Medical Center Emergency Department Renovation

Over the past three years, the Emergency Department at Illinois Masonic has undergone a drastic renovation. The project was completed in five phases, allowing the department to remain open during construction.

Prior to the renovation, visitors entered through the ambulance entry where they had to go through metal detectors. The receptionist was also the triage nurse, making things congested and confusing. The new design alleviates this problem by moving the pedestrian entrance and creating a far more welcoming first impression. The reception desk is separated from three new triage rooms, which decreases the initial waiting time for patients and improves staff efficiency. In the clinical area, patient privacy was improved by converting all twenty-four treatment spaces from curtained areas to private rooms. In addition, a new state-of-the-art Psychiatric Emergency Department suite was added, complete with three private rooms and its own dedicated staff. The new environment is completed with warm colors, wood-look floors and a TV in every room. Overall, this renovation project successfully transformed the Emergency Department into a more user-friendly, efficient, and comfortable setting.



Reception Desk



Waiting Area



New Pedestrian Entrance



Hallway



Eye Lab

PROJECT UPDATE

Illinois College of Optometry

This project, featured in our February issue, was completed and opened for classes in October. The renovation included two high-tech eye labs, five new classrooms and comfortable public areas. This outdated space was successfully transformed into a flexible and communal environment for students and faculty.

ANNOUNCEMENTS

We are pleased to welcome **Joel Camden** to Studio One Design. Joel is a graduate of Missouri State University with a Bachelor of Science in Interior Design. He is NCIDQ certified and has been involved in healthcare projects for the past six years. Joel is an advocate of evidence based design and uses research to inform design decisions and guide clients towards successful healing environments. Joel's knowledge and experience makes him an excellent addition to the Studio One Design team.



JENSEN & HALSTEAD LTD.



STUDIO ONE DESIGN

358 WEST ONTARIO STREET
 CHICAGO, ILLINOIS 60654
 PHONE: 312-664-7557
 FAX: 312-664-7558
www.jensenandhalstead.com
www.s1d.com

PROJECT NEWS

Grand Avenue Surgical Center Chicago, Illinois

The building at 17 West Grand was an unexceptional office building amidst the rush of downtown Chicago. Jensen & Halstead and Studio One Design were hired to convert the basement of this building into a state-of-the-art Ambulatory Surgical Center. The client wanted their new facility to inspire confidence that patients are receiving the best care possible in a comfortable compassionate environment.

The addition of a street-level glass entry transforms the exterior into something worth noticing and sets the tone for the space below. Upon



Surgery Recovery Room

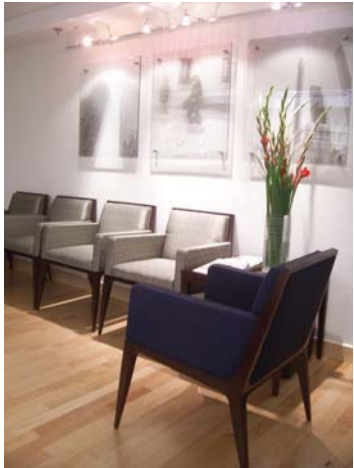
entering, patients are welcomed with a bright

thoughtful waiting area. Rich millwork and brown marble bring warmth to the space, while dark blue accents and interesting artwork provide focal points. Light colored wood floors in the public areas lead back to matching wood-look floors in the clinical areas, providing continuity throughout the facility. Creative lighting solutions, including the use of luminous panels in the recovery room encourage patients to escape from the reality that they are in a surgical suite. The mood of the space combined with distinctive finishes provides the perfect backdrop for the quality of care offered at Grand Avenue Surgical Center.

To see more photos of this facility, visit www.grandavenuesurgicalcenter.com



New Glass Entry at Street-Level



Waiting Area