



PROJECT NEWS

Presbyterian Homes Spas

As a leader in the Senior Living industry, Presbyterian Homes prides itself on offering exceptional, individualized resident care. The recently completed spa project at the McGaw Care Center embodies the Presbyterian Homes spirit, providing residents with warm and relaxing personal care spaces for bathing, grooming and massage. The three new spas were designed with a sense of elegance that has become the Presbyterian Homes trademark. Graceful curves, rich architectural moldings and soft ambient lighting create an intimate environment. The curved walls also function ergonomically to be wheelchair friendly, avoiding sharp corners and allowing residents to maneuver easily. The concave millwork in the grooming area is accessible for the residents, while the extra counter space makes it easy for staff to assist. The shower room was thoroughly tested during the design process to ensure the most functional space for a resident in a wheelchair and a staff member to support them as needed. Radiant-heated floors provide warmth underfoot while the HVAC system removes shower steam from the room without causing a chill. The new spas offer a successful solution, giving seniors a dignified, comfortable space, and keeping Presbyterian Homes at the forefront of innovative design solutions.

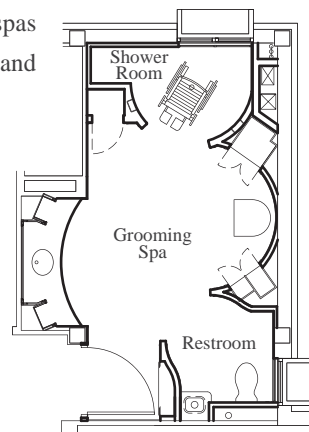


Grooming Area

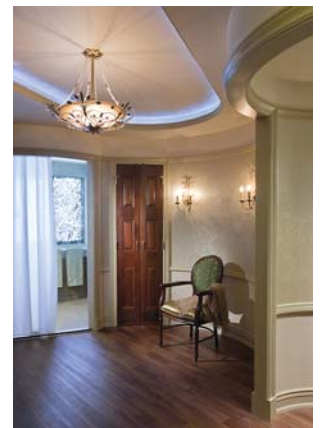
IN THE NEWS

Greening Our Healthcare Facilities by Sara Hopkins, LEED AP

As the largest industrial sector in the United States economy, the healthcare industry generates 2 million tons of waste per year. Toxic pollutants caused by waste have been linked to asthma, autism, learning disabilities, birth defects and childhood cancer; these chronic diseases affect 1/3 of the United States population. The healthcare industry is responsible for treating these illnesses while at the same time they are inadvertently contributing to them. It is crucial for healthcare facilities to reduce their impact, whereby improving the health of their community.



Floor Plan



Looking Toward Shower Room

Perhaps the most critical issue effecting our environment is the building materials themselves. Many products contain volatile organic compounds (VOCs); VOCs are harmful gases that are emitted from a product into the atmosphere. These are most commonly found in paint, wallcovering, and flooring products. Low VOC paints are better for indoor air quality and also allow maintenance staff to retouch in areas where patients are present with minimal disturbance. Wallcovering companies are now offering PVC-free options with the same durability as Type II Vinyl and 100% of the material can be recycled years later when it is removed. Flooring companies also offer PVC-free solutions that can replace VCT and Sheet Vinyl, often utilizing natural products such as rubber or linoleum. In addition, using carpet tile instead of broadloom offers a glue-free alternative, as well as producing less waste during installation. Although some of these products are more expensive, manufacturers are frequently willing to produce a mock-up or reduce the price during an initial review period. They will also provide a life cycle cost analysis of their products, often proving that a low-maintenance Green product will pay for itself in one to two years.

There are a number of associations you can reference when implementing green initiatives. Practice Greenhealth is an organization committed to assisting healthcare institutions in their efforts for sustainable practices by providing resources such as case studies, seminars and articles. In addition, the USGBC and GGHC are leaders in sustainable practices. Visit www.usgbc.com, www.gghc.org and www.practicegreenhealth.org for more information.

This is an excerpt from an article published in the February issue of Chicago Hospital News. To read the full story, go to News at www.jensenandhalstead.com.



PROJECT NEWS

Provena New Lenox

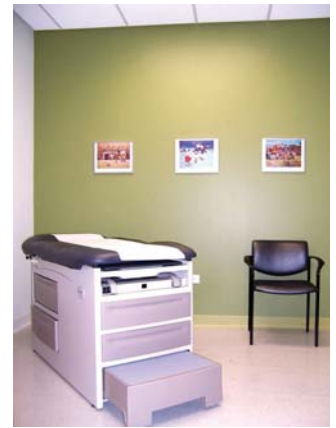
Part of the stated mission of Provena Medical Group is to achieve excellence through continuous growth and development. Their focus is on enhancing the lifestyles of the residents of the community by providing healthcare solutions that are both clinically superior and service oriented. The new Internal Medicine and Pediatric Care facility, located in New Lenox Cedar Center Plaza is an illustration of these ideals.



Waiting Room



Exam Room - Internal Medicine



Exam Room - Pediatric Care

The design team faced the challenge of combining two uses into one space with a shared reception area and shared staff amenities. The waiting room is divided by a partial dividing wall and delineated by a change in paint color, while detailing and furniture tie it all together. Bright colors carry through to the back hallways, exam rooms and offices. The Pediatric Care rooms are kid-friendly with fun colors and interactive artwork, while the Internal Medicine side has a more sophisticated palette. This new facility embodies Provena's reputation for quality by providing the New Lenox community with a warm, inviting space.